

Thermography

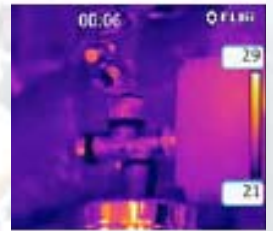
Thermography is an inspection method which maps temperature differences of any object. Temperature differences are caused by bad insulation, wall thickness variances, blocked heating pipes, incorrect process parameters and many more possible causes of future failure of your process equipment. Thermography is the perfect tool to support preventive maintenance as well as electrical safety issues.

Globetech, after an initial survey, will tell you where to focus and whether there are mechanical, electrical or heating issues to be addressed. In addition we identify safety related issues in a process or in an electrical installation and switchgear.

Thermal Imaging, therefore, is extremely efficient in identifying objects and parts requiring preventive maintenance in order to keep your process and assets operational. Thermography can detect problems, prevent unscheduled downtime, guide needed corrective action and increase the safety of your systems.

Thermography is non-contact and non-invasive, so many objects or large areas can be inspected both cost and time effectively.

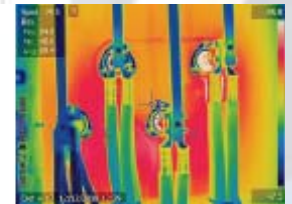
Globetech with the trained personnel and necessary equipment will conduct the inspection. All images will be saved digitally during inspection. Globetech will proceed with detailed analysis of the images and issue to the customer a full colour report and assessment.



GlobeTech broad range of services includes the following:

Main Application Areas

We mainly covers electrical, mechanical and structural systems in petrochemical plants, refineries, steel industry and power plants.



Electrical Systems

We can indicate electrical faults such as loose connections, overloaded or imbalanced circuits, faulty breakers, damaged switches, flawed fuses and a wide range of other unwanted electrical conditions

Insulation efficiency

Refractory linings, pipe and vessel insulation, refrigeration units, cryogenic storage tanks can all suffer from breakdowns. Thermal imaging can test the efficiency of the insulation without shutting the equipment down.



Mechanical Systems

Excessive heat in mechanical systems is a sign of impending trouble. High temperatures can indicate intense excessive resistance, worn components lubrication failure, or other common problems that can lead to expensive or even catastrophic failures.



www.globetech-group.com

Head Office:

Akritas Tower – 604, Digeni Akrita 52,
1061 Nicosia, Cyprus

Tel: +357 22 458260

Fax: +357 22 374535

Postal Address:

PO Box 27415, 1645 Nicosia, Cyprus

E-mail: info@globetech-group.com